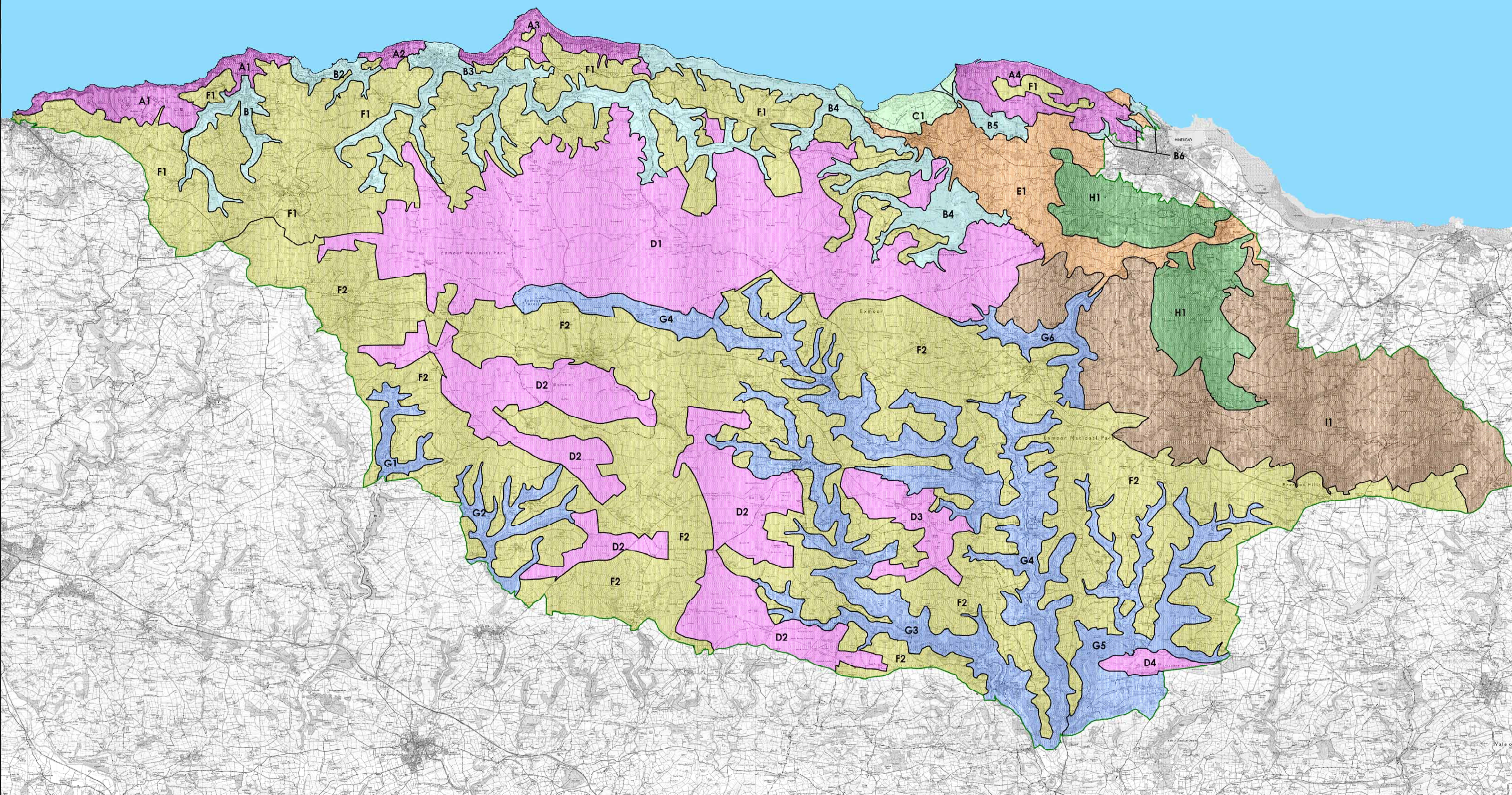


Figure 4: Exmoor National Park Landscape Character Types and Areas



Landscape Types and Character Areas					
	Enclosed Farmed Hills with Commons		<b>A: High Coastal Heaths</b>		<b>C: Low Farmed Coast and Marsh</b>
	Farmed and Settled Vale	A1: Holdstone Down and Trentishoe		C1: Porlock	
	High Coastal Heaths	A2: Valley of Rocks			<b>D: Open Moorland</b>
	High Wooded Coasts, Combes and Cleave	A3: The Foreland		D1: Northern	
	Incised Wooded Valleys	A4: North Hill		D2: Southern	
	Low Farmed Coast and Marsh			D3: Winsford Hill	
	Open Moorland			D4: Haddon Hill	
	Plantations (with Heathland) Hills				<b>E: Farmed and Settled Vale</b>
	Wooded and Farmed Hills with Combes			E1: Porlock - Dunster - Minehead	
					<b>G: Incised Wooded Valleys</b>
				G1: Bray	
				G2: Mole	
				G3: Barle	
				G4: Exe	
				G5: Haddeo	
				G6: Avill	
					<b>H: Plantation (with heathland) Hills</b>
				H1: Croydon and Grabbist	
					<b>I: Wooded and Farmed Hills with Combes</b>
				I1: The Brendons	

**EXMOOR NATIONAL PARK**  
 Details:  
 Exmoor National Park Landscape Character Types and Areas  
 Compiled by: Muff Sully  
 Scale: 1:65,000  
 Date: July 2007  
 This document includes mapping data licensed from Ordnance Survey with the permission of the controller of Her Majesty's Stationery Office. © Crown Copyright 2007. All rights reserved. Licence number: 100024918  
 Digital Mapping Services from Ordnance Survey. Ordnance Survey, 2025 193  
 Tel: 01753 332645  
 E-mail: info@exmoor-nationalpark.gov.uk  
 Web: www.exmoor-nationalpark.gov.uk