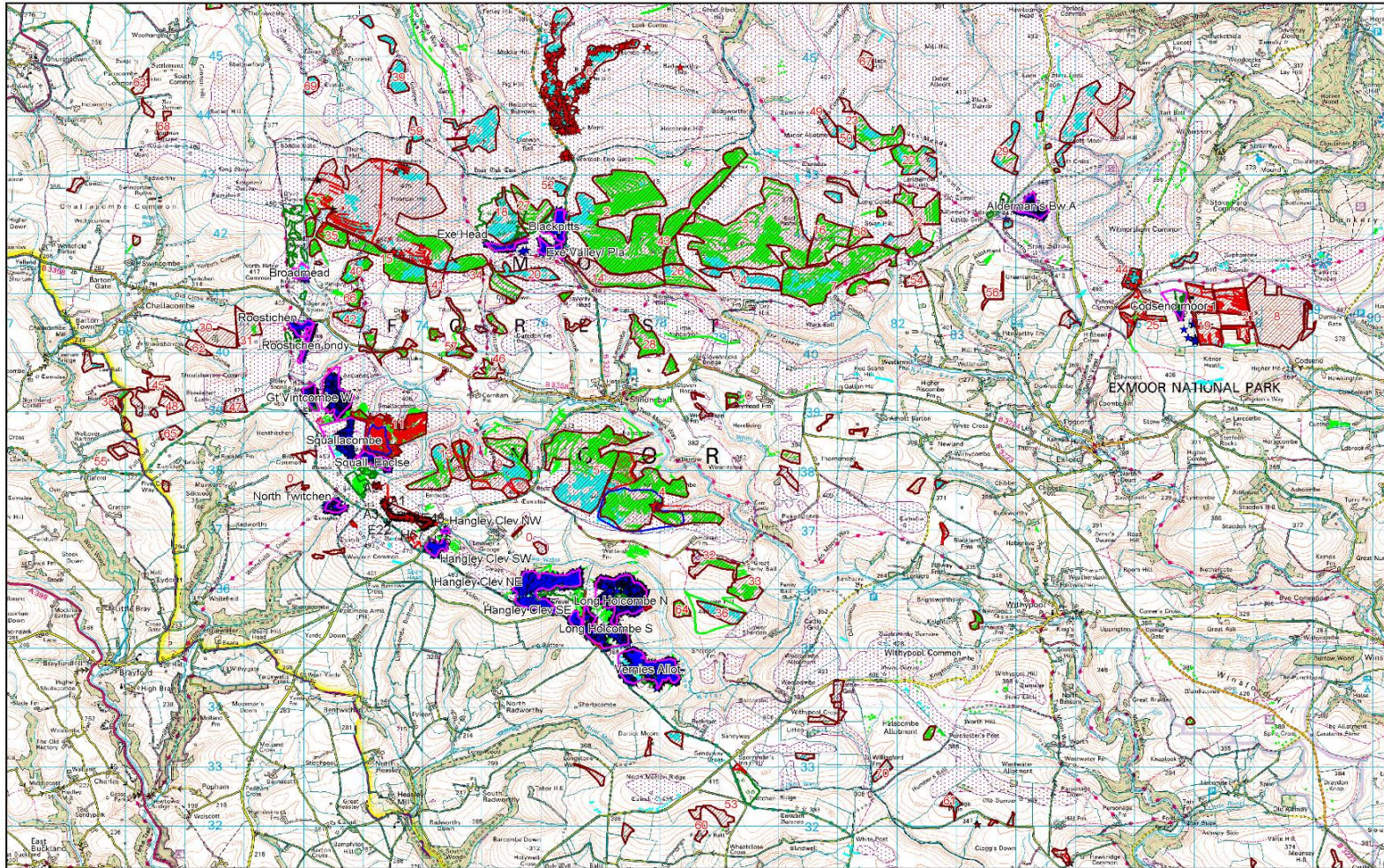


Mire Restoration, Ditches and Peat Cuttings in Peatland on Exmoor

The Exmoor Mire Restoration Project



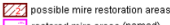
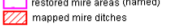
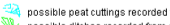
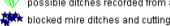



Exmoor National Park Authority
 Exmoor House, Dulverton
 Somerset TA22 9PL
 Tel: 01386 322665
 Fax: 01386 322100
 E-mail: info@exmoor-nationalpark.gov.uk
 Website: www.exmoor-nationalpark.gov.uk

Reproduced from an Ordnance Survey map with
 the permission of the Controller of HMSO © Crown
 Copyright reserved. Licence No 10003078

Cities Revealed: copyright by the GeoInformation
 Group, 2009 and Crown Copyright © All rights reserved
 Mapping Solutions from Dotted Eyes
 © Crown Copyright 2009. All rights reserved.
 Licence number 100019618

Date: 16 September 2010
 Compiled by: DMS

Scale 1:61535

-  possible mire restoration areas
-  restored mire areas (named)
-  mapped mire ditches
-  possible peat cuttings recorded from AP's
-  possible ditches recorded from air photograph
-  blocked mire ditches and cuttings
-  Peat
-  cutting and burking areas



Compiled & Printed by Exmoor National Park Authority